

1998 Vismara V43 Open

€90,000 tax paid

Daggerboard, water-ballasted Italian rocket!



General Information

Manufacturer/Model	Vismara V43 Open
Designer	Alessandro Vismara
Year	1998
Category	Sail
New or Used	Used
Sale Status	Available
Price	€90,000
Tax/VAT Status	Tax paid
Lying	Fano, Italy
Reference	1726775

Specifications

LOA	13.26m
LWL	10.85m
Beam	4.2m
Draft	2.4m
Displacement	6500kg
Engine	Volvo 2030B 29hp
Fuel	diesel
Fuel Capacity	150l
Hull Construction	GRP & epoxy sandwich
Keel Type	Centreboard
Berths	8
Cabins	3
Drinking Water Capacity	440l

Description

Ultra-slippery Italian 43ft custom performance cruiser/racer with hull lines derived from the Volvo 60 class. Retractable t-keel gives 2.4-3.4m draft range while her 3-cabin interior gives plenty of scope for comfortable cruising.

FURTHER BROKER'S COMMENTS:

Unmistakably Vismara in style, performance and technology. Ultra-light weight construction, retractable T-keel plus water ballast and a powerful carbon rig with retractable bowsprit.. LUCIFERA has proven herself to be competitive on the race course as she is enjoyable for fast cruising.

Extensively updated and optimised throughout her life, LUCIFERA is now ready for either ORC or IRC duties, or simply crossing oceans quickly. Her specification highlights include:-

- Recently replaced standing rigging
- Recently replaced engine
- Recently replaced batteries
- Retractable T-keel plus water ballast
- Carbon mast and retractable bowsprit
- Racing and cruising sail wardrobes
- Antal self-tailing racing winches
- Removable genoa furler drum
- TackTick and Raymarine navigation instrumentation
- Shorepower and battery charger
- Hot & cold pressurised water
- Electric anchor windlass

BUILDER'S COMMENTS:

With an ultra-light displacement, LUCIFERA is a decidedly sporty craft: the hull profile – based on the WOR 60 - is as taut as the diagonals; depth is contained, with the transom low on the water and a maximum beam of 60% of the hull and as a result, a centre of volume that is set rather far back. The hull is equipped with water ballast and a centreboard with ballasted end bulb that makes it possible to vary draught from 2.4 to 3.4 metres and this way, to guarantee a high degree of stability together with significant versatility when it comes to cruising. The lightweight hull is made using a composite construction of unidirectional glass fibres and epoxy resin applied under vacuum and post-cured at 70°C, to a core in Termanto with variable density. The same technology is used for the interiors with the addition – also under vacuum and via bonding – of mahogany finishes.

The sail plan, which is clearly inspired by regatta plans, has a carbon mast with wide, angled spreaders, a full-batten main of large dimensions, a furling genoa with very low overlap, removable fore mast and mast headed gennaker with retracting carbon bowsprit. The fact that volumes are generally set back in the vessel can also be seen on the deck, which features a large cockpit with double wheel for the helm, located at the end of the stern so as to make the most of interior volumes, keeping the cockpit where the anchor can be manoeuvred easily. All rig is sent to the cockpit. The deckhouse has four hatches, a bow hatch and four portholes to guarantee excellent light. The division of the interior revolves around the centreboard step which, thanks to a maximum beam of 4.20 m, does not take up space – on the contrary, it contributes by acting as a partition between the bow area with table and sofas, and the stern entrance with doors through to the cabins, galley and course-plotting table.

Specification

CONSTRUCTION

Hull, Deck & Superstructure Construction:

- Composite: sandwich of unidirectional glass fibres and epoxy resin applied under vacuum and post-cured at 70°C, to a core in Termanto with variable density.
- White painted hull with red and blue style lines
- White non-slip side decks and cockpit – repainted 2018

Keel & Rudder:

- Vertical centreboard with T-keel bulb profile
- GRP rudder blade

MACHINERY

Engine & gearbox:

- Volvo Penta 2030B 28hp – recently replaced
- Engine serviced annually
- Fresh-water cooled engine.
- Volvo 120S saildrive gearbox
- Single lever engine control.

Propulsion & Steering:

- 2-bladed folding racing propeller
- Dual wheel steering with hide covered composite helm wheels

ELECTRICAL SYSTEMS

Voltage systems:

- 12vDC domestic systems with 220vAC via shore-power

Battery Banks:

- 1x 140Ah 12vDC engine start battery – recently replaced
- 1x 220Ah 12vDC service battery – recently replaced

Charger/Inverter:

- Battery charger

Alternator:

- Charging of batteries is by alternator from engine

Other Electrical:

- 230v shore power with isolator and circuit breaker
- Electric panel with circuit break-ers

PLUMBING & GAS SYSTEMS

Fresh Water:

- The hot freshwater circuit is led into a well-insulated hot water tank, heated by engine or 230v AC immersion heater element.

Bilge Pumps:

- 2x 12vDC electric bilge pumps
- 2x manual bilge pumps

TANKAGE

Fuel:

- 150 litres Fuel tank capacity

Fresh Water:

- 440 litres Fresh water tank capacity in 2x tanks

NAVIGATION & COMMUNICATION EQUIPMENT

- TackTick wireless system with 5x displays and portable data repeater
- GPS receiver and antenna
- Autohelm chart plotter
- Speed, depth, log and wind transducers
- Raymarine ST6000 Plus autopilot
- 2x Ritchie bulkhead compasses

Communications Equipment:

- VHF

DOMESTIC EQUIPMENT

Galley:

- Smev 4-burner stove with oven
- Twin stainless steel sinks with pressurised hot & cold water supply
- 12vDC Frigoboat refrigerator

Heads:

- 12vDC electric heads
- Hot & cold pressurised showers

ACCOMMODATION

Summary of Accommodation:

- Three-cabin, one heads layout
- Double cabin forward
- Forward heads
- Saloon with seating to port and starboard
- Chart table aft of saloon to starboard
- Galley aft of saloon to port
- Twin double aft cabins

Accommodation Finish:

- White painted bulkheads and floors.
- Varnished mahogany trim
- Cloth upholstery
- Teak and holly floors

DECK EQUIPMENT

Rig:

- Carbon fibre keel-stepped mast with 3-sets of swept back spreaders and masthead-rigged
- Rig sprayed white.
- Navtec rod standing rigging – recently replaced
- Textile backstay with hydraulic backstay adjuster
- Rod-vang with block & tackle adjustment
- Fully-battened mainsail system with battencar track on mast
- Manual genoa furler
- Retractable carbon fibre asymmetric bowsprit
- Adjustable full-beam mainsheet track forward of helm pedestals

Winches:

- 2x Antal W52R self-tailing primary winches
- 4x Antal W46R self-tailing halyard and control line winches

Sails:

Racing Sails:

- Racing laminate mainsail
- Racing laminate genoa (non-furling)
- Gennaker

Cruising Sails:

- Dacron cruising mainsail
- Dacron cruising furling genoa

General:

- Pulpit and pushpit have opening for easy access on board
- Double stainless lifelines.
- Bathing ladder
- Cockpit shower
- Cockpit lights

Anchoring & Mooring:

- 12vDC anchor windlass with anchor and chain
- Mooring lines and fenders

Covers and Canvas:

- Guardwire pads
- Halyard bags
- Helm wheel covers
- Mainsail cover

SAFETY EQUIPMENT:

Life saving:

- MOB recovery system

Fire control:

- Fire extinguishers

Viewing arrangements

Lying - Fano - Italy

Available to view strictly by appointment

Office Hours Mon- Fri 0900 – 17.00

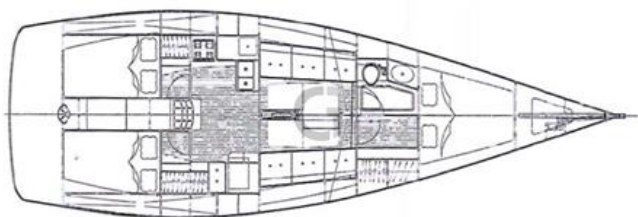
Saturday by prior appointment

For more information or to arrange a viewing please contact us.

Please Note: Due to the varying locations of our yachts, your travel time and the distances that may be involved, we recommend that you only make arrangements to view if you are actively considering purchase.

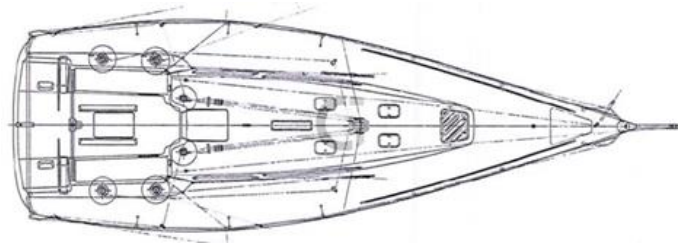
Tel: +44 (0)1590 673715

Email: enquiries@grabauinternational.com















Grabau International offers the details of all vessels in good faith but cannot guarantee or warrant the accuracy of this information or warranty the condition of any vessel and the details do not constitute a part of any contract. A buyer should instruct his agents, or his surveyors, to investigate such details as the buyer desires validated. All vessels are offered subject to prior sale, price change, or withdrawal without notice. Grabau International provides professional yacht conveyancing and legal transfer of title for all yachts as per the ABYA Code of Practice with all deposit payments and final balance payments processed through secure dedicated client accounts solely for that purpose. Our dedicated client accounts are written in trust at Natwest Bank and we are fully insured.