



Lead Broker

Lucio Pellegrini
Broker - Grabau International Palma & Barcelona
+34 675 236 174
lucio@grabauinternational.com

2008 Bandido 90

€4,950,000 tax not paid

Recently refitted tri-deck steel/alloy explorer



General Information

Manufacturer/Model	Bandido 90
Designer	Vripack / Drettmann
Year	2008
Category	Power
New or Used	Used
Sale Status	Available
Price	€4,950,000
Tax/VAT Status	Tax not paid
Lying	Palma de Mallorca, Spain
Reference	2315148

Specifications

LOA	27.9m
LWL	23.84m
Beam	7.7m
Draft	2.3m
Displacement	215000kg
Engine	2x MAN D2842LE410 1,100hp
Engine Hours	1400
Fuel	diesel
Fuel Capacity	38000l
Max Speed	22.224kph
Range	7408km
Hull Construction	Steel
Berths	8
Cabins	4
Drinking Water Capacity	6000l

Description

Recently refitted and upgraded 2008-launched Bandido 90. Steel hull construction with aluminium superstructure. Zero-speed stabilisers and 4,000Nm range.

FURTHER BROKER'S COMMENTS:

Constructed in 2008 by Jade Yachts in Taiwan for Drettmann Germany to designed by Vripack, SEAL is a sparkling example of the Bandido 90 tri-deck displacement superyacht. With steel hull construction complete with bulbous bow and central keel, SEAL benefits from low-draft (just 2.30m) and a enormous 4,000Nm range thanks to her economical twin MAN 1,100hp engines, 38,000 litre fuel capacity and lightweight aluminium deck and superstructure construction.

With a huge tender garage allowing enclosed storage of her full suite of tenders and watertoys, SEAL benefits from unobstructed open guest deck areas across all three levels. Newly-fitted zero-speed stabilisers also ensure absolute comfort whether underway or at anchor in the bay.

Internally, SEAL benefits from a huge owner's cabin forward complete with twin bathrooms and walk-in wardrobe. A further three double guest cabins, each with ensuite and one with additional pullman berth provide plentiful guest accommodation, with crew accommodation for five forward on the lower deck where there is also a crew mess and laundry.

Following a huge refit in 2018/19 and 2020, SEAL is now essentially 'zero-houred' in terms of her mechanical systems and also her interiors which were completely remodelled and refinished. Presently coded for commercial charter in and around the Balearics, SEAL would also be perfect as private yacht for those appreciating space and long-range capabilities.

2020 REFIT DETAILS:

- Complete exterior paintwork in "AWLCRAFT" with a 2-colored water line
- Installation of an AbTrac system with hydraulic Trac ZeroSpeed stabilizers (trac370 with 16x fins)
- New controllable RGB underwater lamps installed at the stern and on the side (20,000 lumens per lamp)
- New logo - RGB can also be illuminated
- Kinetico water softener installed. No water stains when cleaning
- PepWave 4G router with built-in external antenna for Internet reception up to about 30 miles from the coast
- Wifi access points built-in throughout the ship
- Extra freezer built into the bow
- Full service for all moving parts and winches
- Complete interior painting
- All ceilings exchanged and painted high gloss.
- All furniture swapped for well-known design classics from the last 80 years.
- Outside tables made in teak New real wood parquet (sanded and limed oak) laid throughout the ship
- All surfaces covered with natural stone slabs
- New integrated music system with Bluetooth or AirPlay control
- All TVs in the ship replaced and smart TVs installed
- New tender (Williams 435 sport jet)
- 2 seabobs FS5 with custom paint
- Water slide

2018/19 REFIT DETAILS:

- Full engine room refit (Removed all insulation, repainted and new insulation and electric switchboards)
- New Onan generators and completely overhauled MAN main engines (engines and gearboxes got removed from the boat and overhauled at MAN)
- Overhaul of all water and diesel tanks
- New "Böning" yacht management system
- New cctv system and control 2 new gangways (Hydromar)
- All exterior lamps new
- New mattresses

Specification

CONSTRUCTION

Hull, Deck & Superstructure Construction:

- Steel hull construction
- Full displacement hull form with bulbous bow profile
- Central keel protecting shafts, props and rudders
- Aluminium deck and superstructure construction
- Tri-deck configuration
- Teak laid side decks and cockpit floors
- Algrip Awlcraft Grey painted topsides with white painted superstructure - 2020
- Red contrasting waterline stripe

MACHINERY

Engine & gearbox:

- 2x MAN D2842 LE 410 V12 turbo diesel engines producing 1,100hp each – 2018/19
- Gearboxes with shaft drive
- Fresh water engine cooling via raw water intakes and heat exchangers
- Rexroth electronic gear/throttle controls
- Full engine room refit (Removed all insulation, repainted and new insulation and electric switchboards) - 2020

Maintenance & Performance:

- Engine hours: approx. 1,400 as of Summer 2022
- Engines serviced routinely
- Complete 'out of boat' overhaul of engines and gearboxes 2018/19
- Cruising speed: approx. 10 knots
- Maximum speed: approx. 12 knots
- Fuel consumption at cruising speed – approx. 60 litres per hour
- Range – approx. 4,000Nm

Propulsion, Steering and Stabilisation:

- Hydraulic steering with twin rudders
- 5-bladed bronze propellers
- Hydraulic bowthruster
- Hydraulic sternthruster
- TRAC 370 Zero Speed stabilisers - 2020

ELECTRICAL SYSTEMS

Voltage systems:

- 380vAC, 220vAC, 24vDC and 12vDC systems via batteries, shorepower, generators and inverters

Battery Banks:

- 24vDC battery banks for engine start, generator start and domestics

Charging:

- Mastervolt battery chargers for engine start banks and service banks

Inverter:

- Mastervolt inverters

Alternators:

- 2x engine-mounted alternators

Generator:

- 2x Onan 65kw primary generators – 2019
- Generator hours – approx. 2,000 as of summer 2022

- 1x Onan night generator

Shore Power:

- 380vAC shore power connection with Cablemaster
- 220vAC shore power connection

Other Electrical:

- Boening digital switching and monitoring control system - 2019
- 24vDC/12vDC voltage reducer for VHF radios

PLUMBING & GAS SYSTEMS

Fresh Water:

- Water is pressurised by high-pressure electrical pumps
- Hot & cold freshwater pressurised water supply throughout
- Hot water boiler tanks heated via AC immersion heater element.
- Freshwater shore connections
- Kinetico water softener - 2020

Watermaker:

- Idromar reverse osmosis watermaker producing approx. 450 litre per hour

Bilge Pumps:

- Electric bilge pumps
- Manual bilge pump

TANKAGE

Fuel:

- 38,000 litres fuel tank capacity

Fresh Water:

- 6,000 litres water tank capacity

Holding tanks:

- 2,150 litres black water holding tank
- Grey water holding tank

NAVIGATION & COMMUNICATION EQUIPMENT

- Simrad CX44 radar / chart plotters
- 2x Simrad commercial instrument displays with keyboard and trackball
- Simrad RA84/94P 72Nm radar open array scanner
- Simrad IS20 instruments including wind, speed and depth
- Simrad AP50 autopilot system
- Simrad FU50 rudder controls
- AIS transponder
- Steering compasses

Communications Equipment:

- VHF with DSC
- Pepwave 4G router with built in antenna and wifi service up to 30 miles from shore

DOMESTIC EQUIPMENT

Galley Equipment:

- Ceramic hob with extractor hood above
- Oven
- Microwave oven
- Coffee maker
- Twin sinks
- Dishwasher
- 2x Siemens 220vAC refrigerators
- 1x Siemens 220vAC freezer
- Additional freezer built in forward - 2020

Laundry (located in Crew Mess):

- Washing machine
- Dryer

Heads:

- 24vDC Electric vacuum flush freshwater heads in all heads
- Sinks and showers with hot & cold-water supply

Heating & Ventilation

- Reverse-cycle air-conditioning system with 8 units
- Kabola heating system
- Heated floors to bathrooms & heated marble panels behind towel rails

Entertainment:

- KVH satellite TV system with twin domes
- 7x Smart TV's – 2020
- Fusion integrated music system with Bluetooth or AirPlay control - 2020

Security / Onboard communications:

- WiFi access points throughout - 2020
- Internal telephone system
- CCTV system with cameras throughout vessel - 2019
- Telephone and TV shore connection

ACCOMMODATION

Summary of Accommodation:

- Master double cabin on main deck level forward with twin sink bathroom and walk-in wardrobe
- Three double guest cabins on lower deck, each with ensuite bathrooms, two as VIP and one with additional pullman berth
- Crew accommodation for 5 on lower deck with crew mess and bathrooms
- Main deck aft saloon area with formal dining area forward.
- Spacious open plan galley on main deck level, accessing dining area, crew & side deck. Wooden flooring, white work surfaces and preparation area.
- Day bathroom on main deck level
- Sky lounge with bar on upper deck, large exterior terrace aft and forward is the pilothouse with Portuguese bridge.
- Flybridge with lounge and wetbar areas. Helm station forward

Interior Finishes:

- Complete interior painting - 2020
- All ceilings exchanged and painted high gloss. - 2020
- All furniture swapped for well-known design classics from the last 80 years. – 2020
- Real wood parquet (sanded and limed oak) laid throughout – 2020
- All surfaces covered with natural stone - 2020
- Mattresses replaced – 2019

DECK EQUIPMENT

General:

- Flybridge wetbar with 2x BBQ grills, Wok grill, 2x fridges, icemaker and sink
- Structural bimini on flybridge
- Hydromar hydraulic stern passerelle - 2019
- Hydromar side boarding ladder – 2019
- Retractable swim ladder in aft bathing platform
- Exterior lighting – 2019
- Underwatering lighting (RGB) at stern and hull sides – 2020
- Illuminated (RGB) name logo
- Teak cockpit tables
- Aft tender garage
- Winch for main tender and cradle + worm drive for jetski
- Bow locker for storage with work bench, leading down into bilge

Anchoring & Mooring:

- 2x 6kw anchor windlasses with controls
- 2x 4kw capstan windlasses at stern
- Stainless steel bow protection
- Two stainless steel bow anchors, each with 100m of chain
- Stainless steel cleats
- Stainless steel fairleads at bow and stern

Tender & Water Toys

- Tender Williams 435 Jet Sport – 2020
- Jetski
- 2x Seabo FS5 - 2020
- Waterslide - 2020

SAFETY EQUIPMENT

General note on safety equipment: Any safety equipment such as liferafts, Epirbs, fire extinguishers and flares etc. are usually personal to the current owner(s) and if being left on-board as part of the sale of a used vessel may require routine servicing, replacement, or changing to meet a new owners specific needs.

- Collision bulkheads with watertight doors
- Emergency batteries for radio equipment
- FM200 extinguisher to engine room
- Fire alarms throughout
- Hand held extinguishers in all cabins and galley
- Fire fighting pump
- Fire control / alarm system
- Sanshin searchlight
- Kahlenberg horn

Viewing arrangements

Lying: Palma de Mallorca, Spain

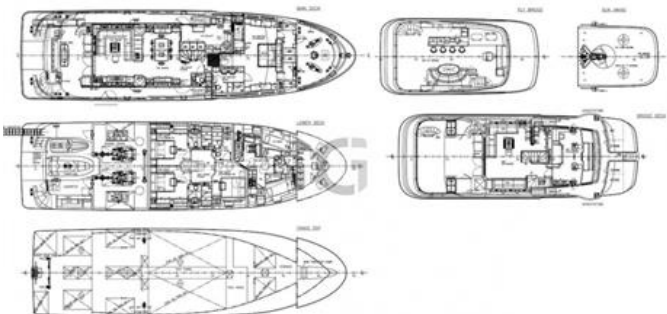
Available to view strictly by appointment

Office Hours Mon- Fri 0900 – 17.00
Saturday by prior appointment

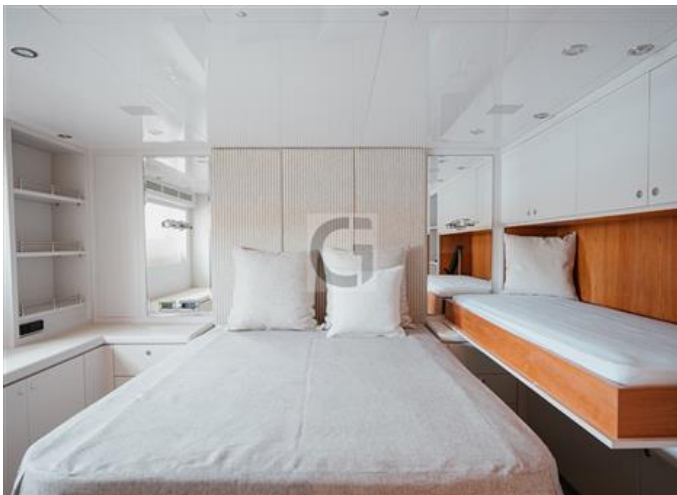
For more information or to arrange a viewing please contact us.

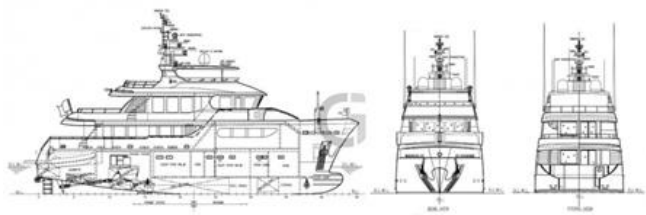
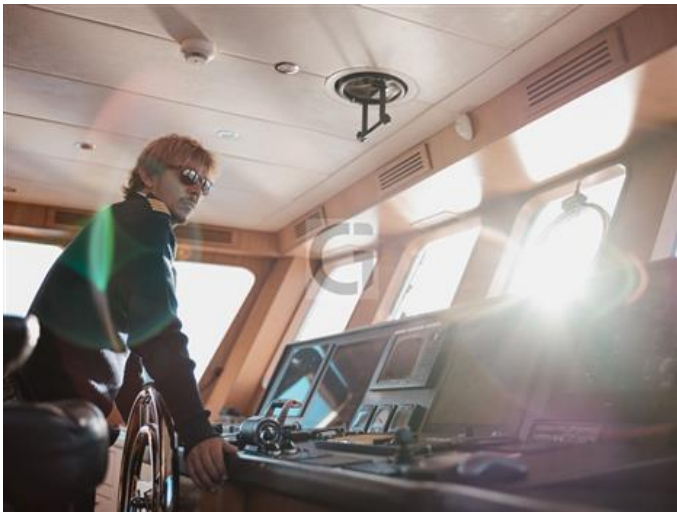
Please Note: Due to the varying locations of our yachts, your travel time and the distances that may be involved, we recommend that you only make arrangements to view if you are actively considering purchase.

Lead Broker: Lucio Pellegrini
Grab International (Palma)
Tel: +34 675 236 174
Email: Lucio@grabauinternational.com











Grabau International offers the details of all vessels in good faith but cannot guarantee or warrant the accuracy of this information or warranty the condition of any vessel and the details do not constitute a part of any contract. A buyer should instruct his agents, or his surveyors, to investigate such details as the buyer desires validated. All vessels are offered subject to prior sale, price change, or withdrawal without notice. Grabau International provides professional yacht conveyancing and legal transfer of title for all yachts as per the ABYA Code of Practice with all deposit payments and final balance payments processed through secure dedicated client accounts solely for that purpose. Our dedicated client accounts are written in trust at Natwest Bank and we are fully insured.